

Application of Prescribed Fire to Untreated Roadside Slash Debris



Overview

1. Purpose
2. Location
3. Background
4. Hand Ignition Testing
5. Aerial Ignition Testing
6. Raggedwood PB (project #899-4-R40)
7. Results & Lessons Learned

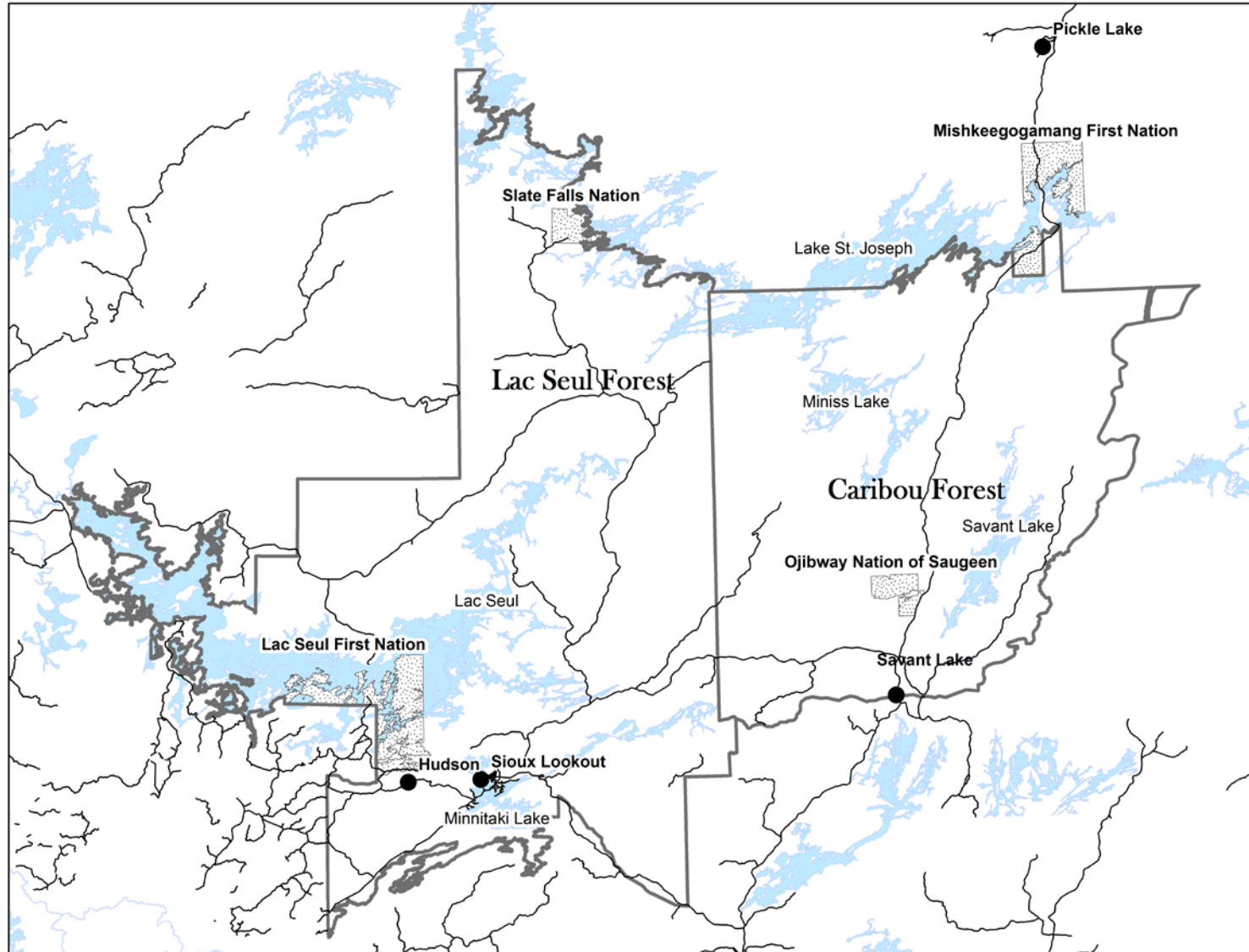
1. Purpose

Reclamation of debris laden areas harvested by bankrupt overlapping licensee

Primary Drivers:

1. Road decommissioning & rehabilitation requirements
2. Aesthetics
3. Improve wildlife habitat
4. Independent Forest Audit
5. AFFES training and development
6. Increase prescribe burning knowledge

2. Location



3. Background

1. Buchanan Forest Products (BFPL) operated as a major OFRL on Caribou Forest
2. BFPL bankruptcy in 2009
3. Regional MNRF, Resolute, AFFES Task Team established in early 2013
4. Initial hand ignition testing of unplied roadside slash debris in late 2013
5. Subsequent aerial ignition testing in 2014
6. Large prescribe burn initiative in 2015 (Raggedwood)

4. Testing – Hand Ignition

- Spruce & pine log deck burning fall 2013 with drip torches
- Achieves reduction of 100% fine fuel, 60% medium fuel and 40% coarse fuel.



Hillside Unit – Hand Ignition

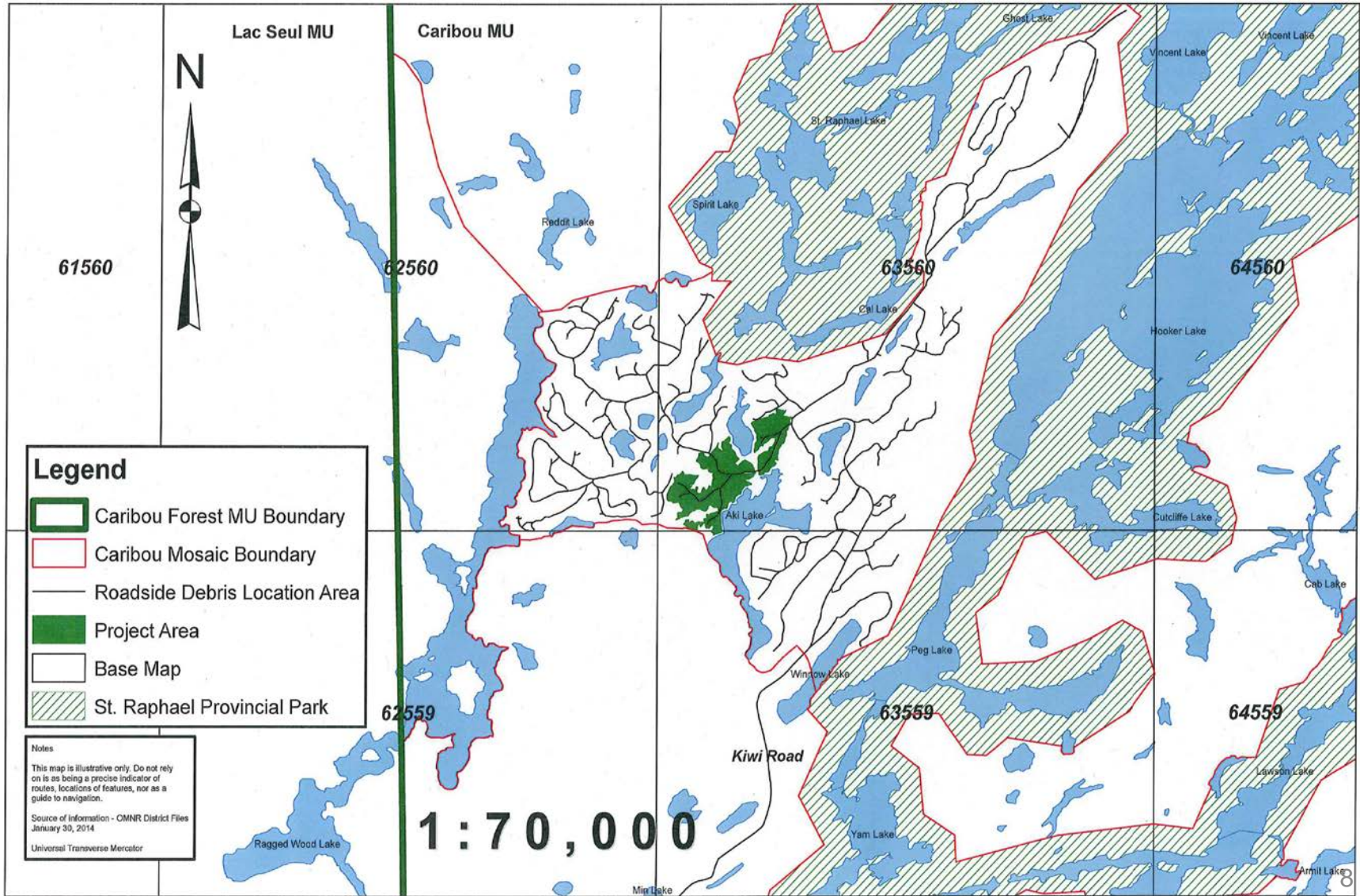
4. Testing – Hand Ignition

- Unpiled roadside slash debris burning fall 2013 with drip torches
- Achieves reduction of 100% fine fuel, 60% medium fuel and 40% coarse fuel.
- Variable results depending on conifer verses hardwood fuel type



Hillside Unit – Hand Ignition

5. Testing – Aerial Ignition



5. Testing – Aerial Ignition



5. Testing – Aerial Ignition



5. Testing – Aerial Ignition



5. Testing – Aerial Ignition



September 27 Results



October 24 Results

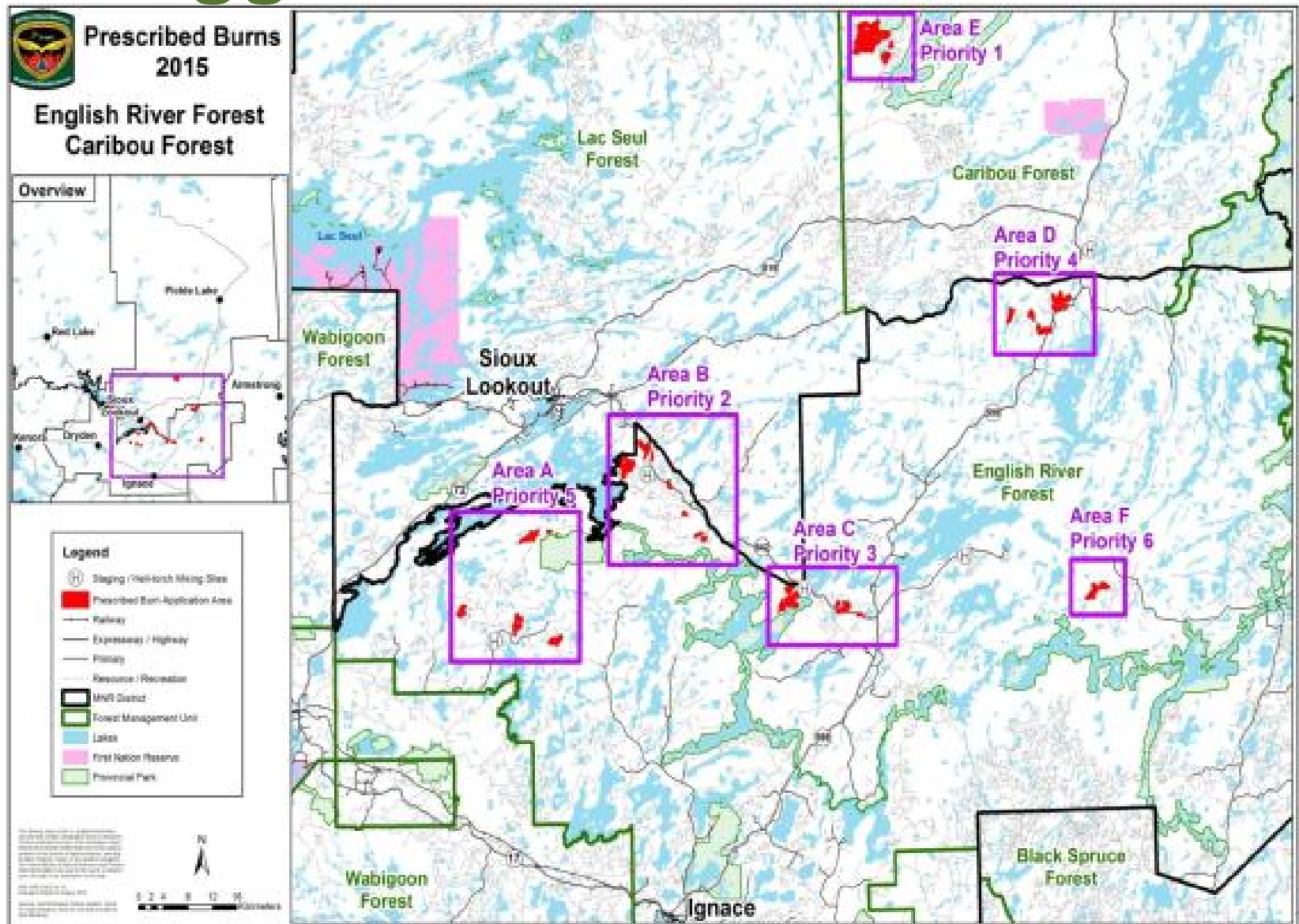
5. Testing – Results

- Good consumption results with limited damage to adjacent plantations
- Optimum burn window & indices determined
- Cost very dependent on:
 - PB Size
 - LCPB or HCPB
- Hillside LCPB (hand ignition) = \$20/ha
- Kiwi HCPB (aerial ignition) = \$150/ha

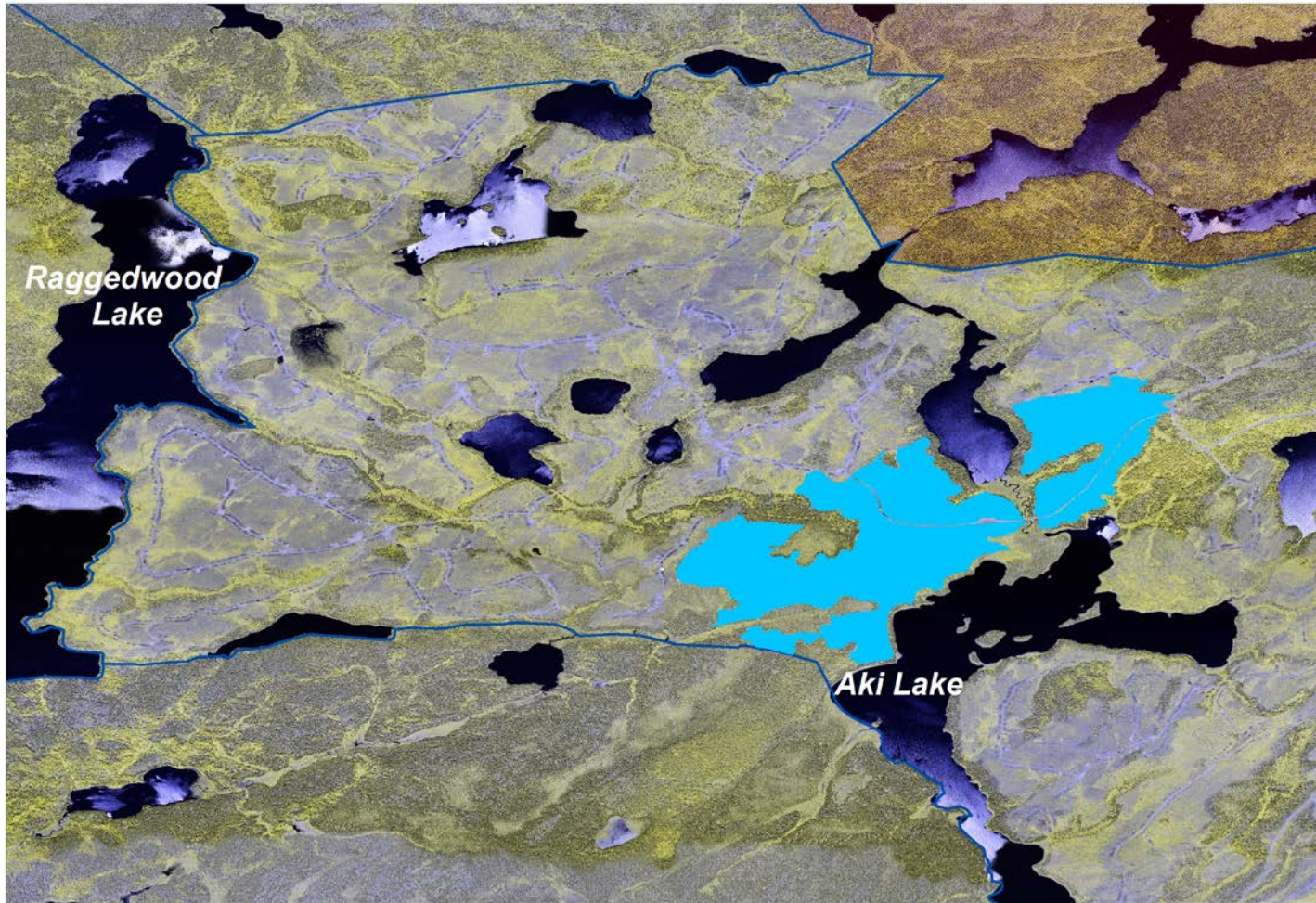
6. Raggedwood Prescribed Burn (FFT Project #899-4-R40)



6. Raggedwood Prescribed Burn



6. Raggedwood Prescribed Burn



© Queens Printer for Ontario 2015

NAD 83 UTM Zone 15N




This map is for illustrative purposes only.
Do not rely on it as being a precise indicator
of routes, location of features, nor as a guide
to navigation.

**Caribou Forest Forestry Futures
Trust Silviculture Round #40 Application**

1:10,000



Legend

-  2014 Aerial Ignition Test Site
-  Caribou Mosaic Boundary
-  St. Raphael Provincial Park

6. Raggedwood Prescribed Burn



Before



After

6. Raggedwood Prescribed Burn

Post Burn



7. Results & Lessons Learned

1. Aerial Ignition effective
2. Fuel type & timing critical
3. New tools & equipment use successful
4. Collaborative Process
5. Logistics can be challenging

Questions?

